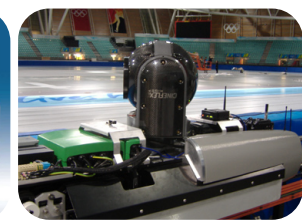


### SONY HDC T1500/1550 CAMERA

The Sony HDC 1500 with HKC-T1500 adaptor camera is a 3 CCD 2/3" High Definition camera where the optical block (HKC-T1500) is split from the main camera body for utilisation as a lightweight and compact camera head without loss of picture quality and functionality. The camera, which is switchable across all the common HD formats can be used as part of a camera chain with SMPTE fibre (1500) or Triax (1550) back (fibre to triax adaptors also available) and CCU, or as a standalone unit for use with HD microwave links or alternatively direct to tape, allowing for seamless integration into the HD broadcast and production environment.

The Sony HDC1500/1550 camera with HKC-T1500 adaptor can be hired as a standalone unit or integrated with SMARthead™ for a full remote head solution. It is also incorporated into the HD Cineflex V14 stabilised camera mount providing the perfect solution for high definition POV, camera tracking and aerial broadcast applications without the need to compromise on camera performance.



## Technical Specifications

<b>POWER REQUIREMENTS:</b>	<b>HDC 1500</b>	240V AC, 1.4A (max) 180V DC, 1.0A (max) 12V DC, 7A (max)
	<b>HDC 1550</b>	180V DC, 1.0A (max) 12V DC, 7A (max)
<b>OPERATING TEMPERATURE:</b>	-20°C to 45°C (-4°F to 113°F)	
<b>STORAGE TEMPERATURE:</b>	-20°C to 60°C (-4°F to 140°F)	
<b>WEIGHT (APPROX):</b>	<b>HDC 1500</b>	4.5KG (9lb 15oz)
	<b>HDC 1550</b>	4.9KG (10lb 13oz)
<b>CAMERA</b>		
<b>PICKUP DEVICE:</b>	3 chip 2/3" type CCD	
<b>EFFECTIVE PICTURE ELEMENTS:</b>	1920 x 1080	
<b>SIGNAL FORMAT:</b>	<b>HDC 1500</b>	1080/50i, 59.94i, 23.98P, 24P, 25P, 29.97P, 1080/50P*, 59.94P* 720/50P, 59.94P
	<b>HDC 1550</b>	1080/50i, 59.94i, 23.98P, 24P, 25P, 29.97P 720/50P, 59.94P
<b>SPECTRUM SYSTEM:</b>	F 1.4 prism system	
<b>LENS MOUNT:</b>	Sony bayonet mount	
<b>BUILT IN FILTERS</b>		
<b>CC:</b>	<b>HDC 1500</b>	A: CROSS B: 3200K C: 4300K D: 6300K E: 8000K
	<b>HDC 1550</b>	A: CROSS B: 3200K C: 4300K D: 6300K E: 8000K
<b>ND:</b>	<b>HDC 1500</b>	1: CLEAR 2: 1/4ND 3: 1/8ND 4: 1/16ND 1/64ND
	<b>HDC 1550</b>	1: CLEAR 2: 1/4ND 3: 1/8ND 4: 1/16ND 1/64ND
<b>SENSITIVITY (1080/59.94i):</b>	F10 at 2000lx (3200K, 89.9% reflectance)	
<b>SIGNAL TO NOISE RATIO (1080/59.94i):</b>	54dB (typical)	
<b>HORIZONTAL RESOLUTION (1080/59.94i):</b>	1000 TV lines (at centre)	
<b>REGISTRATION:</b>	Within 0.02% (all zones, without lens)	
<b>SHUTTER SPEED SELECTION:</b>	<b>HDC 1500</b>	1/100, 1/125, 1/250, 1/500, 1/1000, 1/2000s (1080/59.94i) 1/60, 1/125, 1/1250, 1/500, 1/1000, 1/2000s (1080/50i)
	<b>HDC 1550</b>	1/100, 1/125, 1/250, 1/500, 1/1000, 1/2000s (1080/59.94i) 1/60, 1/125, 1/1250, 1/500, 1/1000, 1/2000s (1080/50i)
<b>MODULATION DEPTH:</b>	45% horizontally (typical) (800 TV lines at centre, 27.5 MHz, with typical lens)	
<b>INPUT/OUTPUT CONNECTORS</b>		
<b>AUDIO INPUT (CH1):</b>	<b>HDC 1500</b>	XLR 3 pin (Female) (1), mic or front mic or line selectable
	<b>HDC 1550</b>	XLR 3 pin (Female) (1), mic or front mic or line selectable
<b>AUDIO INPUT (CH2):</b>	<b>HDC 1500</b>	XLR 3 pin (Female) (1), AES/EBU or mic or line selectable
	<b>HDC 1550</b>	XLR 3 pin (Female) (1), mic or line selectable

<b>MIC 1 INPUT:</b>	XLR 3 pin (Female) (1)	
<b>RETURN CONTROL INPUT:</b>	6 pin (1)	
<b>PROMPTER OUTPUT/GENLOCK INPUT/RETURN INPUT:</b>	BNC type (1), 1.0Vp-p 75	
<b>PROMPTER 2:</b>	<b>HDC 1500</b>	BNC type (1), 1.0Vp-p 75
<b>DC INPUT:</b>	XLR 4 pin (1), 10.5 to 17V DC	
<b>DC OUTPUT:</b>	4 pin (1), 10.5 to 17.5 V DC, 1.5A (maximum)	
<b>TEST OUTPUT:</b>	BNC type (1) Vp-p, 75	
<b>SDI 1 OUTPUT:</b>	<b>HDC 1500</b>	BNC type (1) HD-SDI
<b>SDI 2 OUTPUT:</b>	<b>HDC 1500</b>	BNC type (1) HD-SDI/SD-SDI selectable (without embedded audio)
<b>EARPHONE OUTPUT:</b>	Stereo minijack (1)	
<b>CCU:</b>	<b>HDC 1500</b>	Electro-optical connector (1)
<b>HDCU/HDTX:</b>	Triax connector (1)	
<b>TRACKER:</b>	10 pin (1)	
<b>CRANE:</b>	12 pin	
<b>INTERCOM 1:</b>	XLR 5 pin (Female) (1)	
<b>INTERCOM 2:</b>	XLR 5 pin (Female) (1)	
<b>REMOTE:</b>	8 pin (1)	
<b>LENS:</b>	12 pin (1)	
<b>VIEWFINDER:</b>	20 pin (1)HKC-T1500	

### HKC-T1500

<b>POWER REQUIREMENTS FOR CAMERA INPUT:</b>	13.5 to 17.0 V DC	
<b>OPERATING TEMPERATURE:</b>	-20°C to 45°C (-4°F to 113°F)	
<b>OPERATING HUMIDITY:</b>	10% to 90% (no condensation)	
<b>WEIGHT:</b>	Cable adapter approximately 0.5KG (1lb 2oz) CCD block adapter approximately 1.9KG (4lb 3 oz) - with CCD block	

### CCD BLOCK ADAPTOR I/F

<b>CAMERA CABLE:</b>	55 pin multicore cable connector (Male)	
<b>MIC IN:</b>	XLR 3 pin (Female) (1)	
<b>LENS:</b>	12 pin (1)	
<b>VF:</b>	20 pin (1)	
<b>INTERCOM:</b>	XLR 5 pin (Female) (1)	

### CABLE ADAPTOR I/F

<b>CAMERA CABLE:</b>	55 pin multicore cable connector (Female)	
<b>MIC OUT:</b>	XLR 3 pin (Male) (1)	
<b>VF:</b>	20 pin (1)	
<b>INCOM:</b>	XLR 5 pin (Male) (1)	

\*1080/59.94P and 1080/50P signals can be output only from the HDC 1500 camera head in a stand alone configuration